



# Designing and supporting inclusive practices in Higher Education - the InclusiveHE project

23 November 2021

Julie Wietrich

eucen



Co-Funded by  
the Erasmus+ Programme of  
the European Union

This project has been funded with support from the European Commission. This publication reflects the views only of the author, and the Commission cannot be held responsible for any use which may be made of the information contained therein.  
Project Number: KA203-E0B7E0F2

# **Inclusive higher education: a key priority for Europe**

---

## **EUROPEAN HIGHER EDUCATION AREA**

### **Yerevan Communiqué 2015**

Objective: achieve by 2020 an EHEA where “higher education is contributing effectively to build inclusive societies”.

## **EUROPEAN UNION**

### **Agenda for Higher Education 2017**

Priority for action: “Building inclusive and connected higher education systems”

# Inclusive higher education: a key priority for Europe

---

...with room for improvement

- Only a minority of countries in the EHEA have developed National Action Plans to follow up on their commitments
  - Several universities have taken position in the EU, but they mainly focus on diversity or on some aspects of diversity
- **Further action is needed** at institutional and national level to strengthen the inclusiveness of European HE systems

# The InclusiveHE project

- Co-funded by the Erasmus+ programme
- 1/12/2020 – 30/11/2022
- Coordinated by Åbo Akademi University (Finland)
- 6 partners from Belgium, Cyprus, Finland, Latvia and Romania



The graphic for the Inclusive-HE project features a central illustration of four hands holding graduation caps, surrounded by colorful circles. The text 'inclusive-HE' is at the top left, and the title 'Designing and supporting inclusive practices in Higher Education' is in the center. Below the title are social media icons for a website, Facebook, and Twitter. At the bottom left is the Erasmus+ logo, and at the bottom right is a disclaimer.

inclusive-HE

Designing and supporting inclusive practices in Higher Education

[www.inclusivehe.eu](http://www.inclusivehe.eu) [inclusive.eu](https://www.facebook.com/inclusive.eu) [EuropelInclusive](https://twitter.com/EuropelInclusive)

Co-funded by the Erasmus+ Programme of the European Union

This project has been funded with support from the European Commission. This publication reflects the views only of the author, and the Commission cannot be held responsible for any use which may be made of the information contained therein. Project Number: 2020-1-FI01-KA203-066572

# **What is inclusion?**

---

Inclusion refers to policies, practices and measures that HEIs implement to provide real studying, learning and working opportunities to groups who have traditionally been excluded.

# Identifying existing inclusive policies and practices in Europe

---

## METHODOLOGY

### SYSTEMATIC LITERATURE REVIEW

Of peer-reviewed scientific studies from across the globe between the years 2000 to 2021.

### REVIEW OF POLICIES AND PRACTICES

At European and national level in Cyprus, Finland, Latvia and Romania.

### FOCUS GROUP INTERVIEWS

Organised at European and national level with key stakeholders: experts, academic and administrative staff, students.

### ONLINE QUESTIONNAIRE

Targeting key stakeholders across Europe to identify further inclusive policies and practices.

# Identifying existing inclusive policies and practices in Europe

---

## SOME INSIGHTS

- **National policies'** implementation is quite limited and focuses on admission.
- **Institutional policies** mainly depends on the existence of national policies.
- **Financial support** is available for disadvantaged groups in many EU countries.
- **Trainings on inclusion** are mainly non-compulsory.
- **Diversity offices** are quite common in Europe, although their sizes and scopes vary.
- **Student guidance and support** is available in most institutions.
- Change and improvements regarding **accessibility** started years ago, imposed by the law, but largely focus on mobility.
- Inclusive strategies developed by universities are **not necessarily connected between institutions and with the system.**

# Identifying existing inclusive policies and practices in Europe

---

## RECOMMENDATIONS

- Provide **incentives** to HEIs to widen access and improve completion rates.
- Define **long-term objectives** and monitor the access and completion of HE by students from under-represented groups.
- Support under-represented groups of students to access and complete HE.
- Make **staff training** on inclusion **compulsory**.
- **Inform** (potential) students about programmes, funding and other aspects of HE.
- Provide **flexible learning pathways**.
- Enhance **dialogue between all stakeholders**: universities, policy makers, public authorities.
- Ensure the **recognition of prior learning**.



# Identifying existing inclusive policies and practices in Europe

---

## THE INCLUSIVE FRAMEWORK

### **POLICIES**

- national
- regional
- institutional

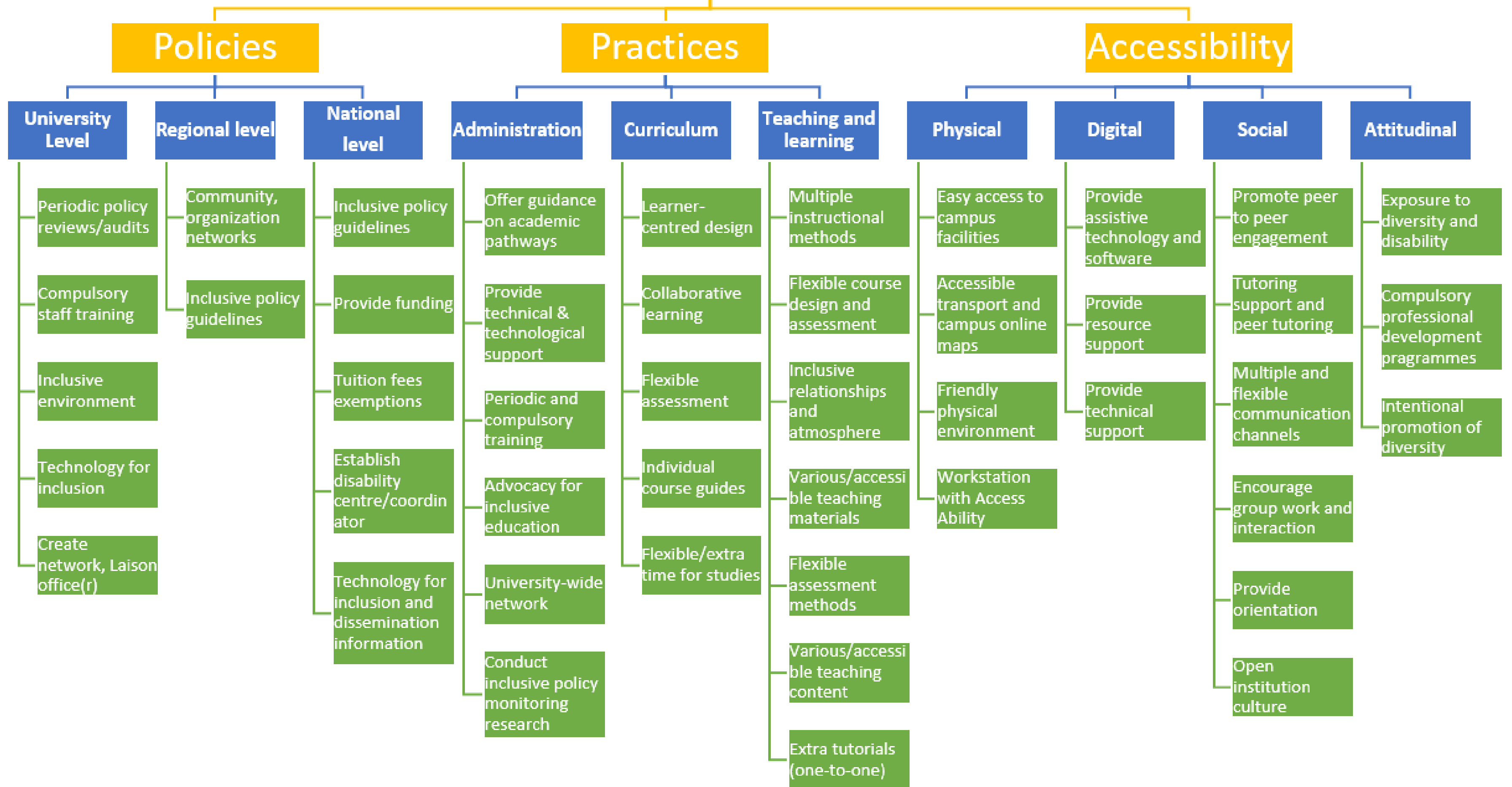
### **PRACTICES**

- administration
- curriculum
- teaching & learning

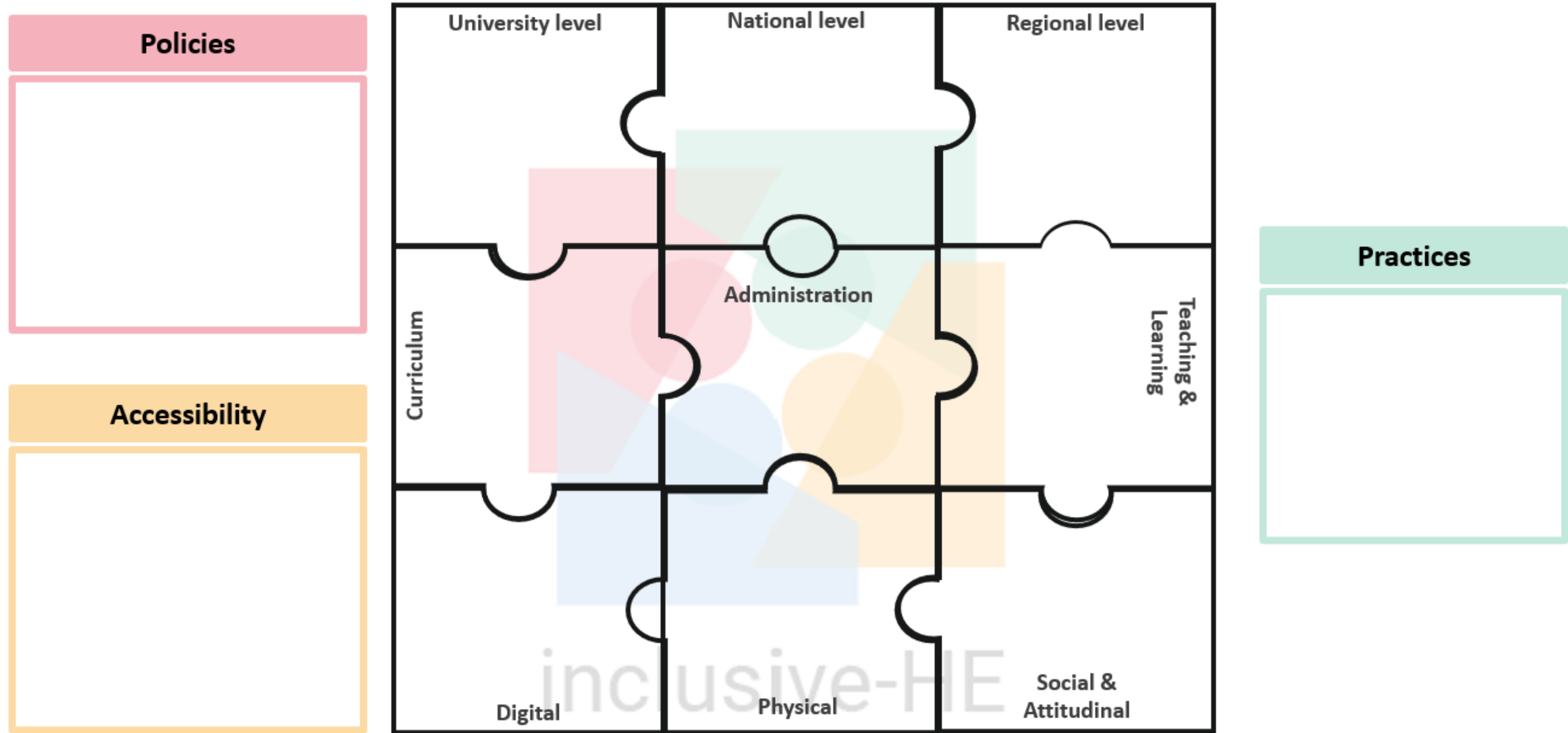
### **ACCESSIBILITY**

- physical
- digital
- social & attitudinal

# Inclusive HE Best Practices



# Inclusive Higher Education Canvas



# Inclusive Higher Education SWOT Analysis



## Strengths

- What do you/your institution do well with regards to inclusive policies and/or practices?

## Weaknesses

- What could/should be improved? Is there a lack of resources, knowledge, skills, etc.?

## Opportunities

- What are your/your institution's goals with regards to inclusive policies and/or practices?

## Threats

- What kinds of obstacles are there for meeting the goals?

inclusive-HE



<https://inclusivehe.eu/en>

# Inclusive Higher Education Strategy [Worksheet Template]

\*\*\*\*\*

### Description:

The Inclusive Higher Education Strategy Worksheet serves as a vehicle to support higher education institutions in developing their own plan for moving their inclusive policies and practices forward from their current state.

### How to use this template:

- First assess, reflect and analyze the current state of inclusive policies and practices in your institution using the Inclusive Higher Education Checklist, Canvas and SWOT-analysis template.
- Then use this template to define strategic goals and initiatives and create an inclusive higher education strategy for your institution/department/other.
- Use the Inclusive Higher Education Framework and Database for inspiration and guidelines from the current state-of-the art of good policies and practices in higher education across Europe.
- Share the results with all those involved in the implementation of the designed actions, strategies and plans.



<https://inclusivehe.eu/en>

Initiative 1: [insert a title]	
<b>Goal(s)</b>	- Define the goals and describe the initiative
<b>Action(s)</b>	- Identify and list/describe the actions that will be taken
<b>Timeframe</b>	- Define a timeframe for the initiative or actions
<b>Priority</b>	- Identify the priority level of the initiative as either high, medium or low
<b>Actors to be involved</b>	- Identify internal and external actors that will be involved in the initiative

Initiative 2: [insert title]	
<b>Goal(s)</b>	- Define the goals and describe the initiative

# Tools to support the development of inclusive higher education

---



## TOOLKIT

for administrators and policy makers at HEIs to support them in developing inclusive policies

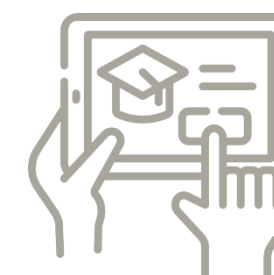
[Available online](#)



## TRAINING COURSE

for learning designers and academics on how to design inclusive education programs

[Available by April 2022](#)



## E-LEARNING PLATFORM & MOOC

on inclusive practices for academics and support staff

[Available by November 2022](#)

# Encouraging exchange of experience and peer learning to foster inclusion in higher education

---



Focus groups in Cyprus, Finland, Latvia and Romania and at EU level



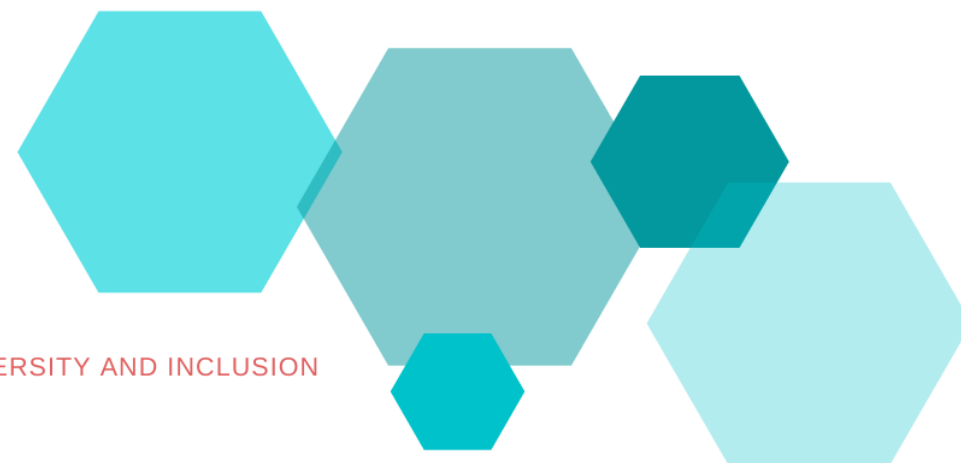
Consultations online



Inclusive Europe social media and newsletter

**Inclusive  
Europe**

THE EUROPEAN SOCIAL MEDIA LINK TO DIVERSITY AND INCLUSION



**Get involved!**

[projects@eucen.eu](mailto:projects@eucen.eu)

# Thank you!

---

[projects@eucen.eu](mailto:projects@eucen.eu)

<https://inclusivehe.eu/en/>

